



# K. S. R. M. COLLEGE OF ENGINEERING

(UGC-AUTONOMOUS)

Kadapa, Andhra Pradesh, India – 516 005

Approved by AICTE, New Delhi & Affiliated to JNTUA, Ananthapuramu.

An ISO 14001:2004 & 9001:2015 Certified Institution



## 7.1.3 – Geotagged Photos Solid Waste –

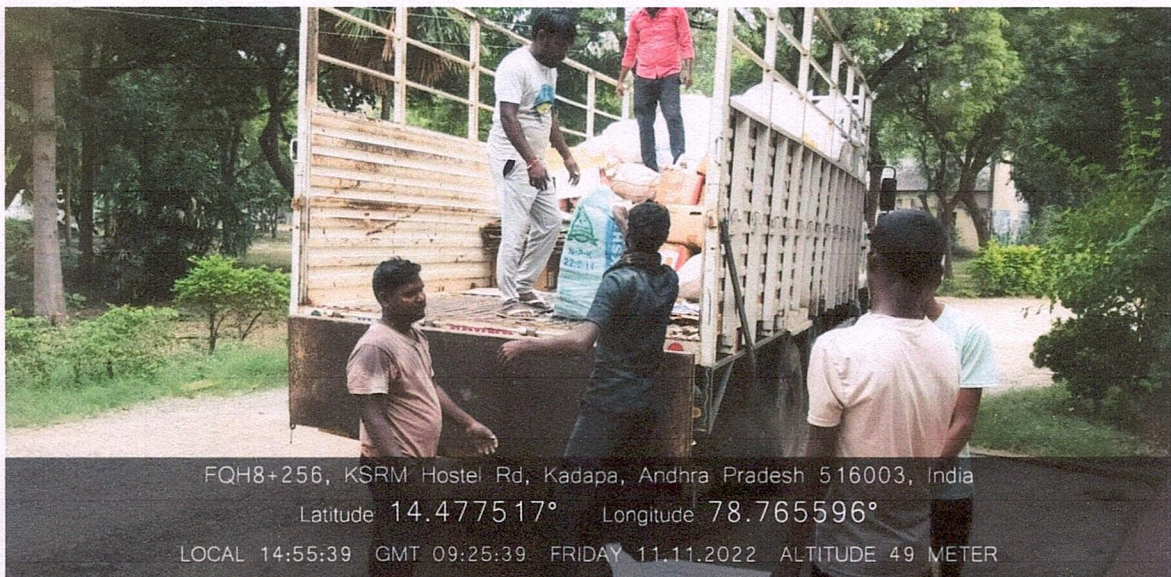


K.S.R.M Administration Building, KSRM Hostel Rd, Andhra Pradesh 516003, India

Latitude 14.477762° Longitude 78.765989°

LOCAL 14:09:44 GMT 08:39:44 FRIDAY 11.11.2022 ALTITUDE 50 METER

Collection of Solid Waste from the Examination Section



FQH8+256, KSRM Hostel Rd, Kadapa, Andhra Pradesh 516003, India

Latitude 14.477517° Longitude 78.765596°

LOCAL 14:55:39 GMT 09:25:39 FRIDAY 11.11.2022 ALTITUDE 49 METER

Collection of Solid Waste from the Central Library

*IQAC*

**IQAC**

Co-ordinator

Internal Quality Assurance Cell (IQAC)

KSRM College of Engineering

Kadapa - 516 003

*V. S. S. Murthy*

**Principal**

PRINCIPAL

**K.S.R.M. COLLEGE OF ENGINEERING**

**KADAPA-516005 (A.P)**



/krmce.ac.in

Follow Us:



/krmceofficial



# K. S. R. M. COLLEGE OF ENGINEERING

(UGC-AUTONOMOUS)

Kadapa, Andhra Pradesh, India – 516 005

Approved by AICTE, New Delhi & Affiliated to JNTUA, Ananthapuramu.

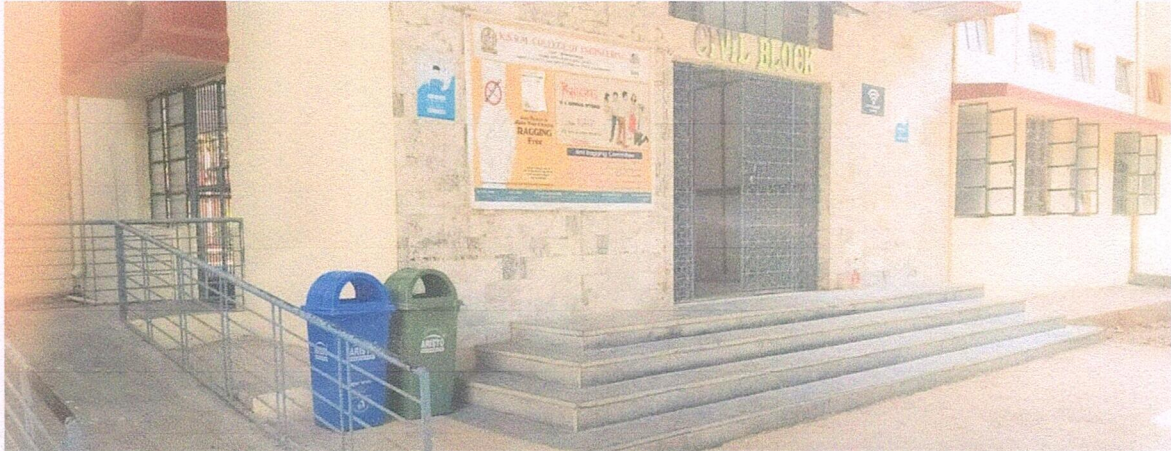
An ISO 14001:2004 & 9001:2015 Certified Institution



## 7.1.3 – Geotagged Photos

### Solid Waste –

### Twin Dustbins at various places in the college –

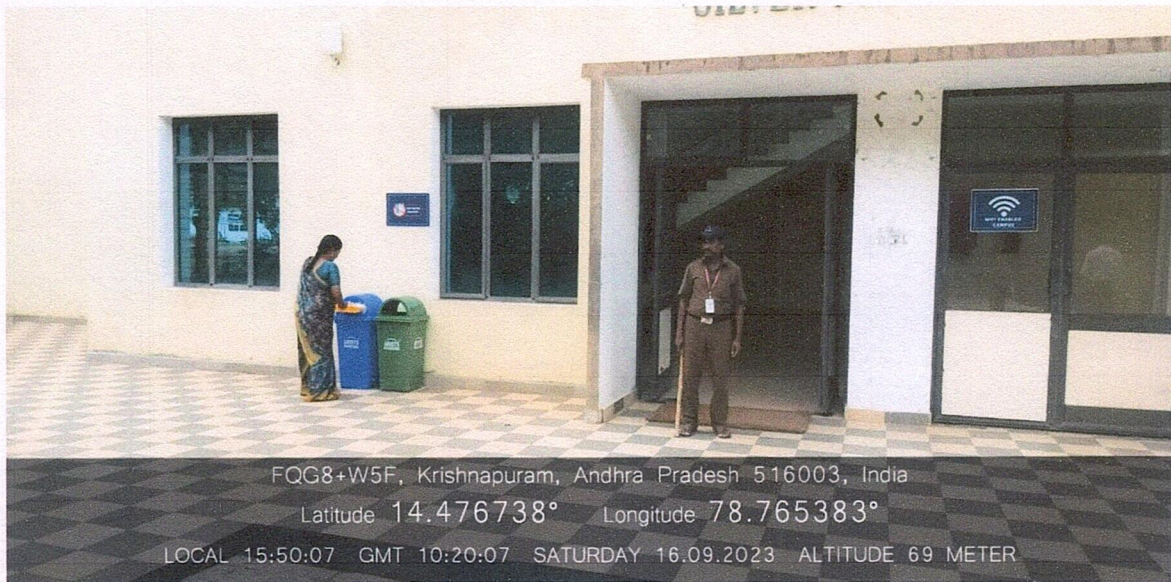


Compute Science and Civil Engineering, KSRM Hostel Rd, Andhra Pradesh 516003, India

Latitude 14.477818° Longitude 78.765262°

LOCAL 15:04:59 GMT 09:34:59 SATURDAY 16.09.2023 ALTITUDE 71 METER

**At Civil Engineering Block**



FQG8+W5F, Krishnapuram, Andhra Pradesh 516003, India

Latitude 14.476738° Longitude 78.765383°

LOCAL 15:50:07 GMT 10:20:07 SATURDAY 16.09.2023 ALTITUDE 69 METER

**At Silver Jubilee Block**

*[Handwritten Signature]*

**IOAC**  
Co-ordinator

Internal Quality Assurance Cell (IQAC)  
KSRM College of Engineering  
Kadapa - 516 003

*[Handwritten Signature]*

**Principal**  
PRINCIPAL

**K.S.R.M. COLLEGE OF ENGINEERING**  
KADAPA-516005 (A.P)



# K. S. R. M. COLLEGE OF ENGINEERING

(UGC-AUTONOMOUS)

Kadapa, Andhra Pradesh, India – 516 005

Approved by AICTE, New Delhi & Affiliated to JNTUA, Ananthapuramu.

An ISO 14001:2004 & 9001:2015 Certified Institution



## 7.1.3 – Geotagged Photos Liquid Waste –



FQG8+W5F, Krishnapuram, Andhra Pradesh 516003, India

Latitude 14.476715° Longitude 78.765575°

LOCAL 12:35:42 GMT 07:05:42 TUESDAY 19.09.2023 ALTITUDE 72 METER

RO Plant



Compute Science and Civil Engineering, KSRM Hostel Rd, Andhra Pradesh 516003, India

Latitude 14.477637° Longitude 78.765142°

LOCAL 14:26:23 GMT 08:56:23 SATURDAY 16.09.2023 ALTITUDE 73 METER

Wastewater is utilized for plantation through a drip system

*Ches*  
IQAC

Co-ordinator

Internal Quality Assurance Cell (IQAC)

KSRM College of Engineering

Kadapa - 516 003

*V. S. S. Murthy*

Principal  
PRINCIPAL

K.S.R.M. COLLEGE OF ENGINEERING

KADAPA-516005 (A.P)



# K. S. R. M. COLLEGE OF ENGINEERING

(UGC-AUTONOMOUS)

Kadapa, Andhra Pradesh, India – 516 005

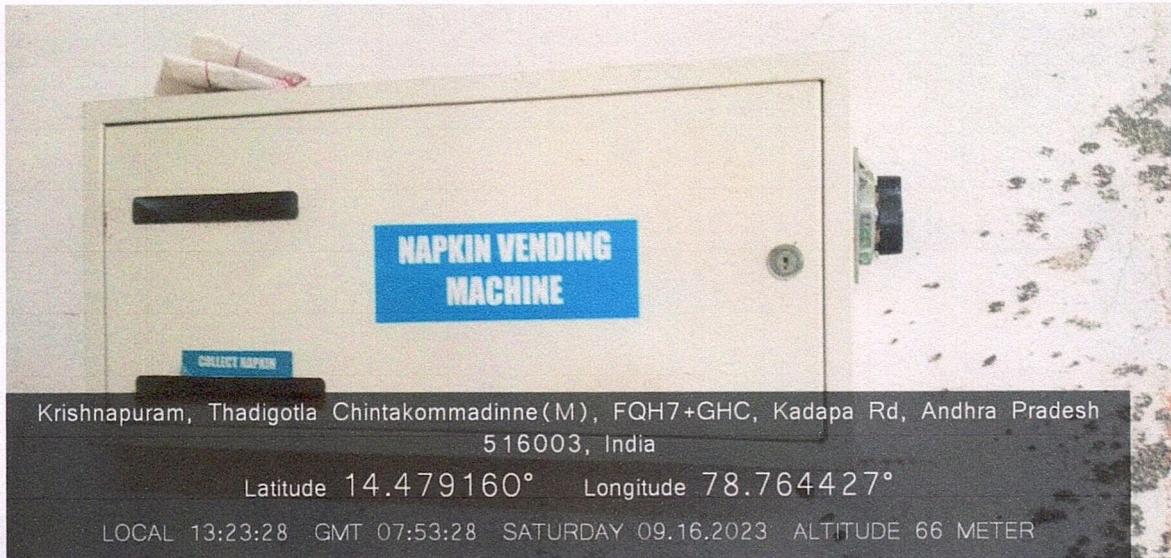
Approved by AICTE, New Delhi & Affiliated to JNTUA, Ananthapuramu.

An ISO 14001:2004 & 9001:2015 Certified Institution



**KSNR**  
lives on..

## 7.1.3 – Geotagged Photos Biomedical Waste Management –



Krishnapuram, Thadigotla Chintakommadinne (M), FQH7+GHC, Kadapa Rd, Andhra Pradesh  
516003, India

Latitude 14.479160° Longitude 78.764427°

LOCAL 13:23:28 GMT 07:53:28 SATURDAY 09.16.2023 ALTITUDE 66 METER

Sanitary Napkin Vending Machine in the Senior Girls Hostel



Krishnapuram, Thadigotla Chintakommadinne (M), FQH7+GHC, Kadapa Rd, Andhra Pradesh  
516003, India

Latitude 14.479160° Longitude 78.764427°

LOCAL 13:23:45 GMT 07:53:45 SATURDAY 09.16.2023 ALTITUDE 66 METER

Incinerator Facility in the Senior Girls Hostel

IQAC

Co-ordinator

Internal Quality Assurance Cell (IQAC)

K.S.R.M. College of Engineering

Kadapa - 516 003

*V. S. S. mm/15*

Principal  
PRINCIPAL

K.S.R.M. COLLEGE OF ENGINEERING

KADAPA-516005 (A.P)



# K. S. R. M. COLLEGE OF ENGINEERING

(UGC-AUTONOMOUS)

Kadapa, Andhra Pradesh, India – 516 005

Approved by AICTE, New Delhi & Affiliated to JNTUA, Ananthapuramu.

An ISO 14001:2004 & 9001:2015 Certified Institution



## 7.1.3 – Geotagged Photos

### E-Waste –



Compute Science and Civil Engineering, KSRM Hostel Rd, Andhra Pradesh 516003, India

Latitude 14.477592° Longitude 78.764999°

LOCAL 12:16:48 GMT 06:46:48 FRIDAY 25.11.2022 ALTITUDE 49 METER

Collection of E-Waste from Civil Engineering Department



FQH8+F57, Krishnapuram, Andhra Pradesh 516003, India

Latitude 14.478859° Longitude 78.765127°

LOCAL 12:14:12 GMT 06:44:12 THURSDAY 21.09.2023 ALTITUDE 71 METER

Collection of E-Waste from Computer Science and Engineering Department



**IQAC**

Co-ordinator

Internal Quality Assurance Cell (IQAC)

KSRM College of Engineering

Kadapa - 516 003

V. S. S. M. M. S.

**Principal**  
PRINCIPAL

**K.S.R.M. COLLEGE OF ENGINEERING**  
KADAPA-516005 (A.P)



/krmce.ac.in

Follow Us:



/krmceofficial



# K. S. R. M. COLLEGE OF ENGINEERING

(UGC-AUTONOMOUS)

Kadapa, Andhra Pradesh, India – 516 005

Approved by AICTE, New Delhi & Affiliated to JNTUA, Ananthapuramu.

An ISO 14001:2004 & 9001:2015 Certified Institution



## 7.1.3 – Geotagged Photos

### Hazardous chemicals and radioactive waste management –



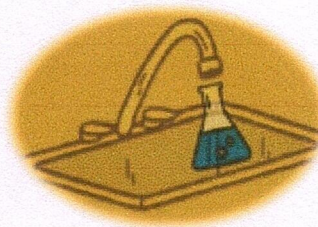
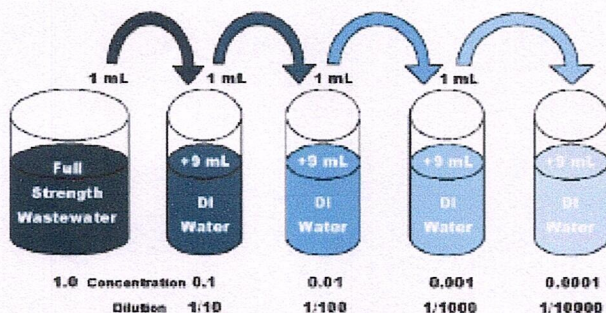
## K. S. R. M. COLLEGE OF ENGINEERING

(UGC-AUTONOMOUS)

Kadapa, Andhra Pradesh, India – 516 005

Approved by AICTE, New Delhi & Affiliated to JNTUA, Ananthapuramu.

An ISO 14001:2004 & 9001:2015 Certified Institution



### Instructions to the Students

1. Wash all the glassware thoroughly, before and after use.
2. Dispose the waste sample (i.e., after adding chemicals) only after diluting at least in the ratio of 1:1.
3. Wash your hands as soon as the experiment is completed.
4. Try not to touch any concentrated acids / chemicals with bare hands
5. Report any spill to the instructor immediately.
6. Wash any spill on any body parts with plenty of water.

Staff In-Charge  
Environmental Engineering Laboratory

**IQAC**  
Co-ordinator

Internal Quality Assurance Cell (IQAC)

KSR M College of Engineering

Kadapa - 516 005 / [ksrmce.ac.in](http://ksrmce.ac.in)

Follow Us:



/ksrmceofficial

**Principal**  
PRINCIPAL

K.S.R.M. COLLEGE OF ENGINEERING  
KADAPA-516005 (A.P)