



K. S. R. M. COLLEGE OF ENGINEERING

(UGC-AUTONOMOUS)

Kadapa, Andhra Pradesh, India – 516 005

Approved by AICTE, New Delhi & Affiliated to JNTUA, Ananthapuramu.

An ISO 14001:2004 & 9001:2015 Certified Institution



7.1.2 – Geotagged Photos

Solar Energy –

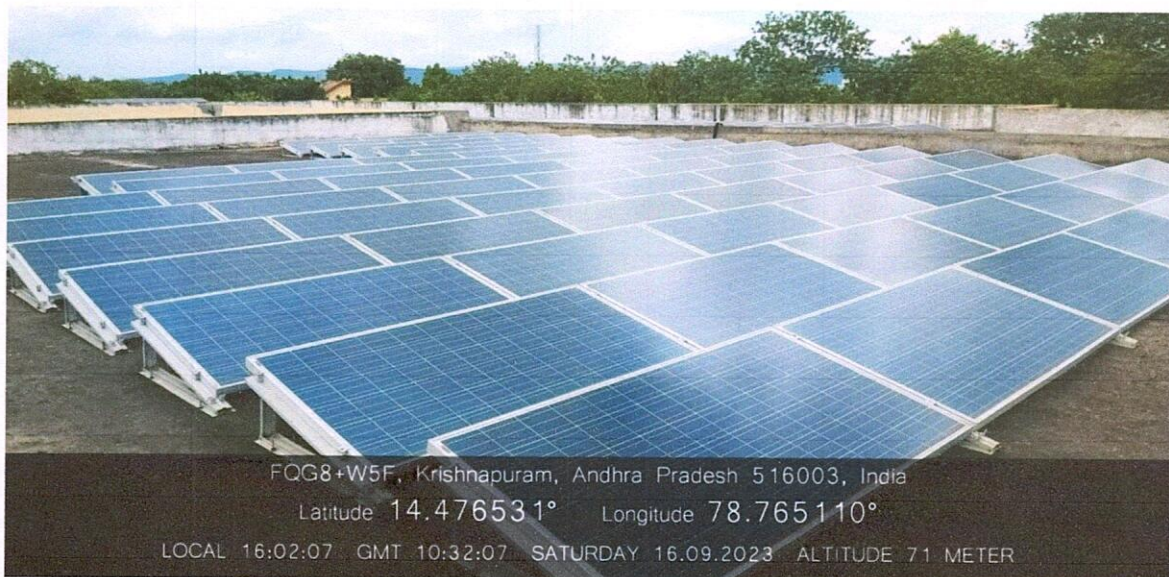


FQH8+256, KSRM Hostel Rd, Kadapa, Andhra Pradesh 516003, India

Latitude 14.477428° Longitude 78.765561°

LOCAL 14:49:42 GMT 09:19:42 SATURDAY 16.09.2023 ALTITUDE 71 METER

Solar Panels on the Rooftop of Civil Engineering Block



FQG8+W5F, Krishnapuram, Andhra Pradesh 516003, India

Latitude 14.476531° Longitude 78.765110°

LOCAL 16:02:07 GMT 10:32:07 SATURDAY 16.09.2023 ALTITUDE 71 METER

Solar Panels on the Rooftop of Silver Jubilee Engineering Block


IQAC

Co-ordinator

Internal Quality Assurance Cell (IQAC)
KSRM College of Engineering
Kadapa - 516 003

V. S. S. Muli

Principal

PRINCIPAL
K.S.R.M. COLLEGE OF ENGINEERING
KADAPA-516005, (A.P.)



/krmce.ac.in

Follow Us:



/krmceofficial



K. S. R. M. COLLEGE OF ENGINEERING

(UGC-AUTONOMOUS)

Kadapa, Andhra Pradesh, India – 516 005

Approved by AICTE, New Delhi & Affiliated to JNTUA, Ananthapuramu.

An ISO 14001:2004 & 9001:2015 Certified Institution



7.1.2 – Geotagged Photos

Solar Energy –

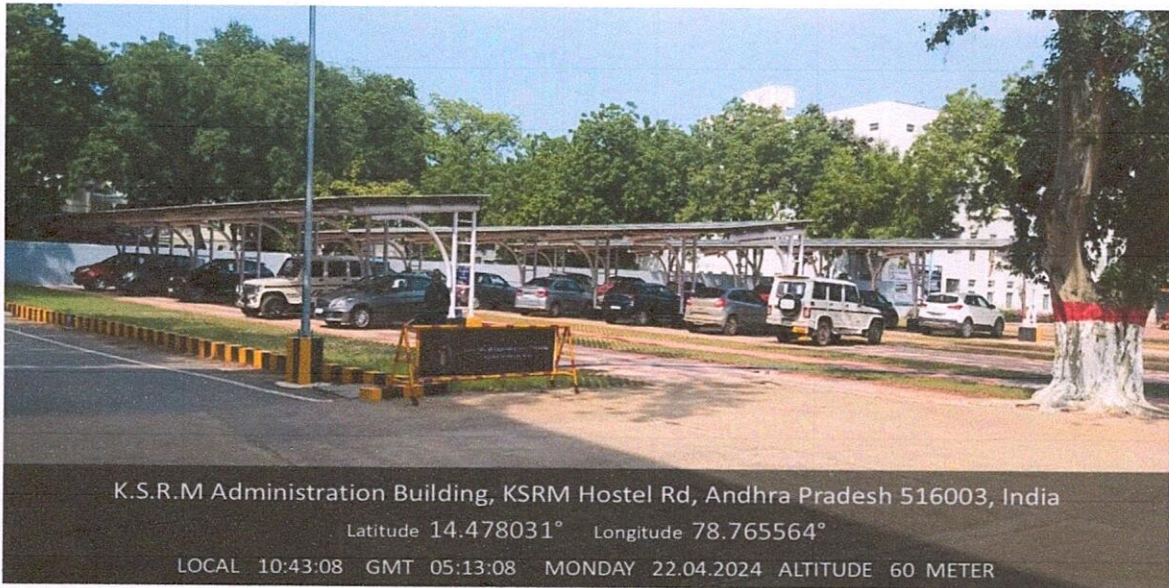


Ksrm College of Engineering, Kadapa Rd, Krishnapuram, Andhra Pradesh 516003, India

Latitude 14.479256° Longitude 78.765618°

LOCAL 10:45:46 GMT 05:15:46 MONDAY 22.04.2024 ALTITUDE 58 METER

Solar Panels on Two Wheeler Parking



K.S.R.M Administration Building, KSRM Hostel Rd, Andhra Pradesh 516003, India

Latitude 14.478031° Longitude 78.765564°

LOCAL 10:43:08 GMT 05:13:08 MONDAY 22.04.2024 ALTITUDE 60 METER

Solar Panels on Four Wheeler Parking

IQAC
IQAC

Co-ordinator

Internal Quality Assurance Cell (IQAC)
KSRM College of Engineering
Kadapa - 516 003

V. S. S. Muli

Principal

PRINCIPAL
K.S.R.M. COLLEGE OF ENGINEERING
KADAPA-516005, (A.P.)



/kasmce.ac.in

Follow Us:



/kasmceofficial



K. S. R. M. COLLEGE OF ENGINEERING

(UGC-AUTONOMOUS)

Kadapa, Andhra Pradesh, India – 516 005

Approved by AICTE, New Delhi & Affiliated to JNTUA, Ananthapuramu.

An ISO 14001:2004 & 9001:2015 Certified Institution



7.1.2 – Geotagged Photos

Biogas Plant –



Biogas Plant near Central Kitchen


IQAC

Co-ordinator

Internal Quality Assurance Cell (IQAC)
KSRM College of Engineering
Kadapa - 516 003

V. S. S. Murthy

Principal

PRINCIPAL
K.S.R.M. COLLEGE OF ENGINEERING
KADAPA-516005, (A.P.)



/kasmce.ac.in

Follow Us:



/kasmceofficial



K. S. R. M. COLLEGE OF ENGINEERING

(UGC-AUTONOMOUS)

Kadapa, Andhra Pradesh, India – 516 005

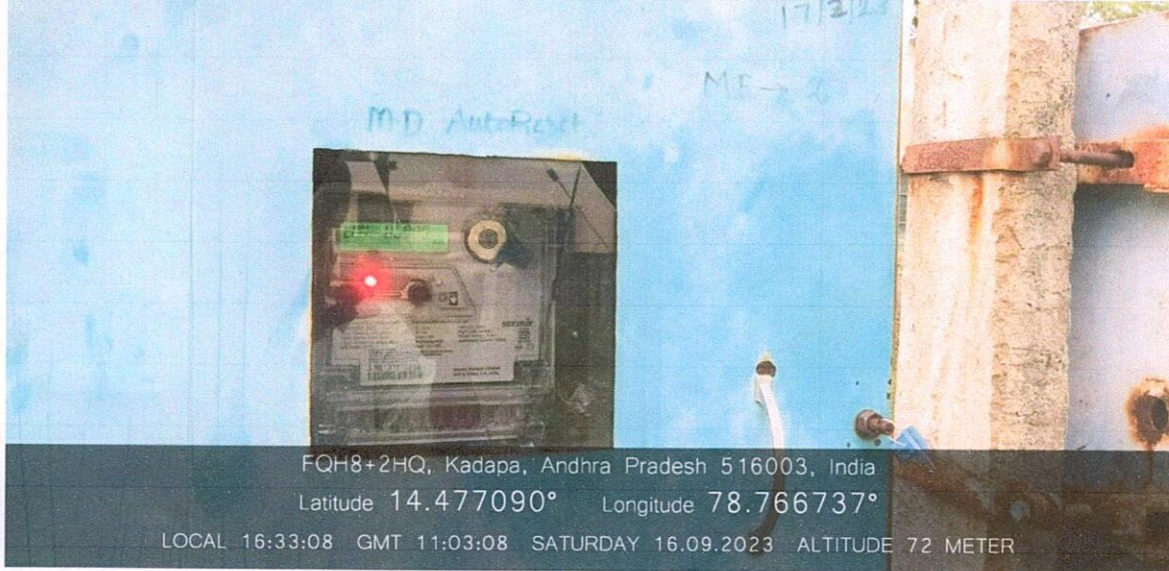
Approved by AICTE, New Delhi & Affiliated to JNTUA, Ananthapuramu.

An ISO 14001:2004 & 9001:2015 Certified Institution



7.1.2 – Geotagged Photos

Wheeling to the Grid –



Wheeling to the Grid


IQAC

Co-ordinator

Internal Quality Assurance Cell (IQAC)
K.S.R.M. College of Engineering
Kadapa - 516 003

V. S. S. Murthy
Principal

PRINCIPAL
K.S.R.M. COLLEGE OF ENGINEERING
KADAPA-516005, (A.P.)

102 kW SOLAR ROOFTOP PLANT AT KSRM ENGG. COLLEGE KADAPA

Modules Capacity : 101.9 kWp

Connection:

INVERTER NO. 1 - 6 Strings X 20 Modules of 305Wp in series

INVERTER NO. 2 & 3 - 6 Strings X 18 Modules of 305Wp

Total No. of Delta Energy 30TL Inverters = 03 Nos.

Inverters:

Delta (RPI M30)

Nominal Output Power : 30 kVA

Max. Input Power : 38 kWp

Max. DC Voltage : 1000 V

Voltage Range MPP : 480 - 800 V

Max DC Current : 68 A

Solar Module :-

Astroenergy CHSM6612P : 305 Wp

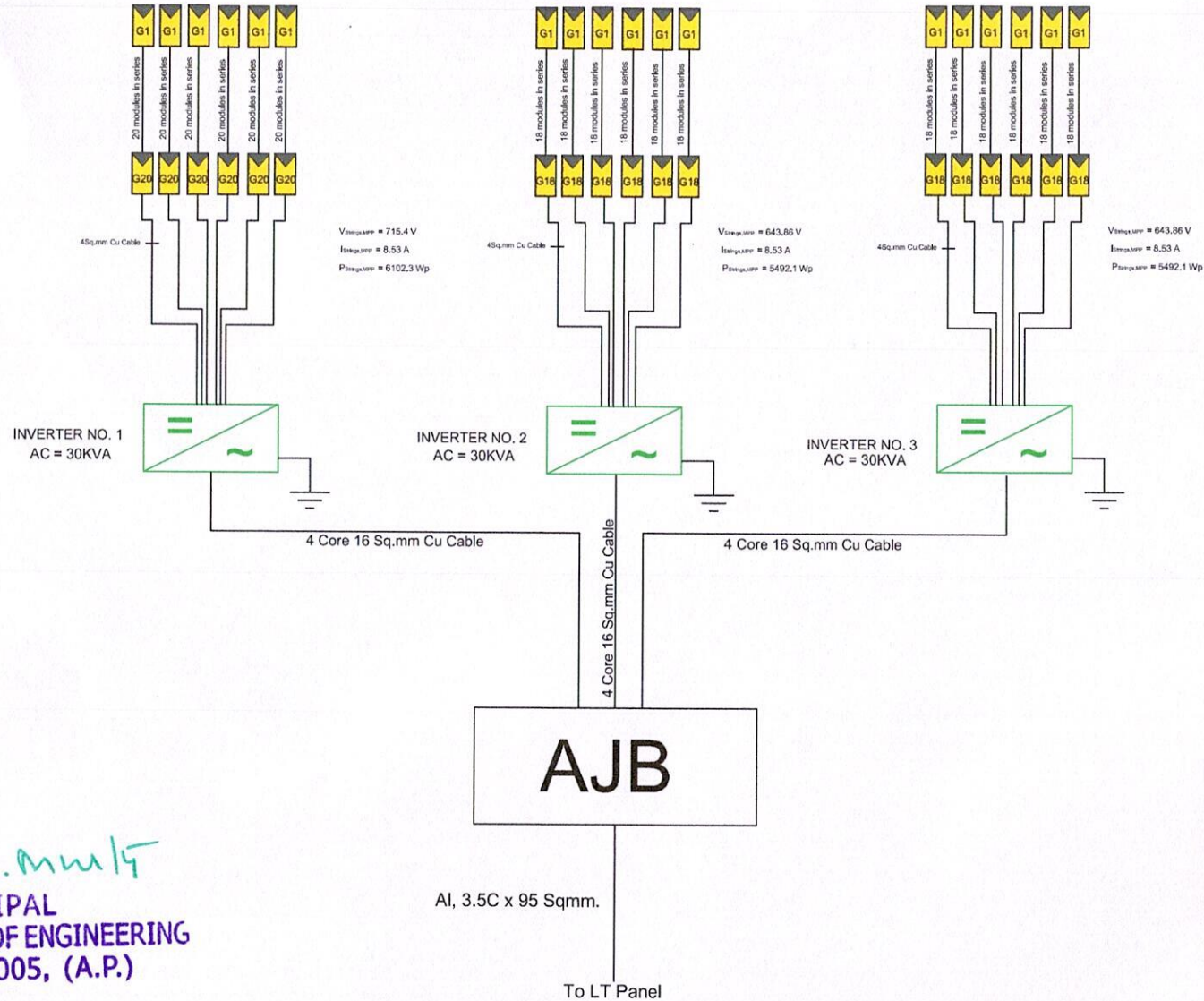
Nominal Power : 305 W

Voltage at MPP : 35.77 V

Current at MPP : 8.53 A

Open Circuit Voltage : 45.29 V

Short Circuit Current : 8.95 A



V. S. S. Muli

PRINCIPAL
K.S.R.M. COLLEGE OF ENGINEERING
KADAPA-516005, (A.P.)

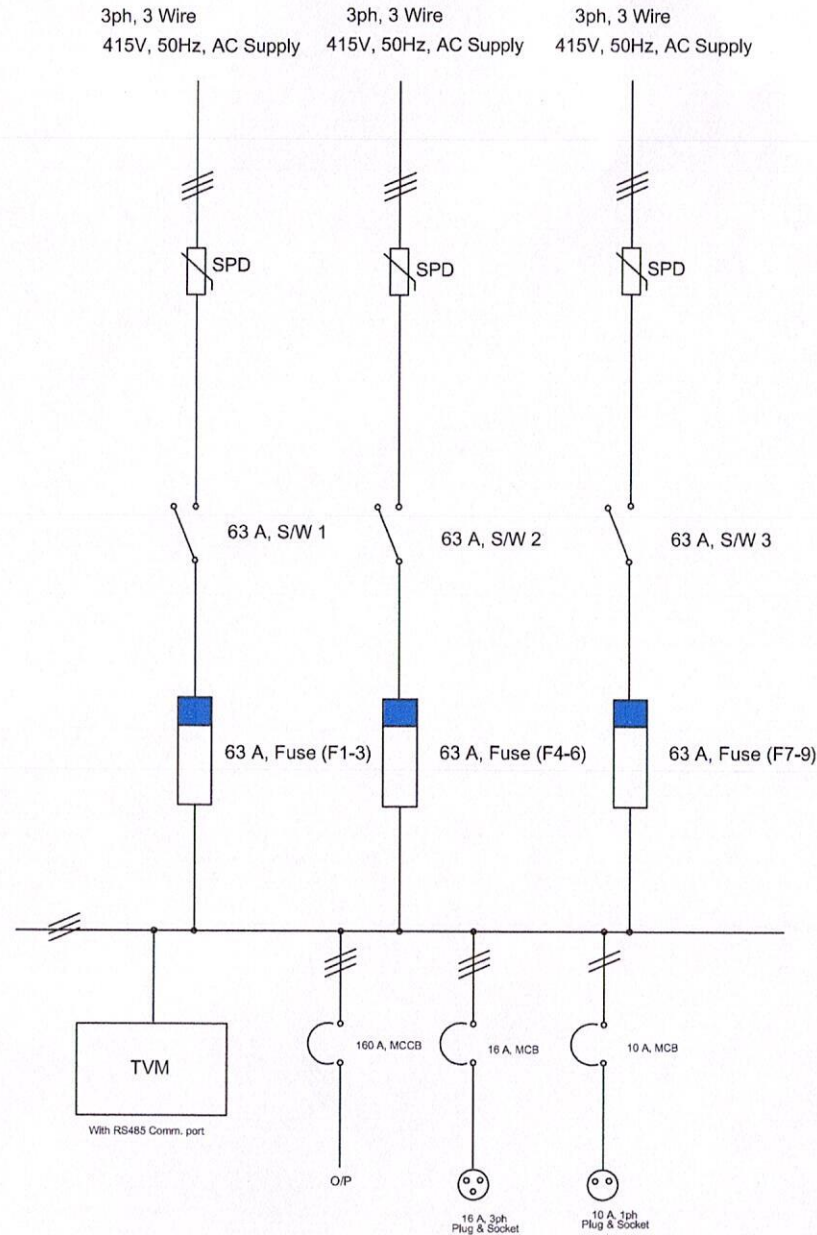
AI, 3.5C x 95 Sqmm.

To LT Panel

REV No.	DESCRIPTIONS	DRAWN		CHECKED		APPROVED	
		INITIAL	DATE	INITIAL	DATE	INITIAL	DATE
0	SLD	MPB	15.05.15	DBK	15.05.15	PKP	15.05.15
1	REV SLD	MPB	30.05.15	AC	30.05.15	PKP	30.05.15

BPC BY:			
CLIENT NAME: KSRM ENGG. COLLEGE KADAPA			
PROJECT NAME: 102 KW ROOF TOP PROJECT AT KADAPA		PROJECT CODE: 1415006	
CONSULTANT NAME: N/A		SUPPLIER/CONTRACTOR: N/A	
DRAWING TITLE: SINGLE LINE DIAGRAM OF SYSTEM		SCALE: NTS	
DRAWING No: RFX-KSRM-KAD-1415006-ED101		PROJECTION: --	
RELEASED FOR:		SHEET SIZE: A3	
<input type="checkbox"/> Preliminary <input type="checkbox"/> Information <input type="checkbox"/> Tender <input checked="" type="checkbox"/> Approval <input type="checkbox"/> Construction		REV. No. 1	

Single Line Diagram of AJB Panel (SJ Block)



V. S. S. Murthy

PRINCIPAL
K.S.R.M. COLLEGE OF ENGINEERING
KADAPA-516005, (A.P.)

REV. No.	DESCRIPTIONS	DRAWN INITIAL	DATE	CHECKED INITIAL	DATE	APPROVED INITIAL	DATE
0	SLD of AJB Panel	MPB	11.05.15	DBK	11.05.15	PKP	11.05.15

EPC BY:

Reflex ENERGY

CLIENT NAME: KORM ENGO. COLLEGE, KADAPA
PROJECT NAME: 102 KW ROOF TOP PROJECT AT KADAPA
CONSULTANT NAME: N/A
DRAWING TITLE: SINGLE LINE DIAGRAM OF AJB
DRAWING No. RFX-KSRM-KAD-1415006-ED102

PROJECT CODE: 1415006
SUPPLIER/CONTRACTOR: N/A
SCALE: NTS
PROJECTION: ---
SHEET SIZE: A3
REV. No.: 0

RELEASED FOR: Information minor approval construction



K. S. R. M. COLLEGE OF ENGINEERING

(UGC-AUTONOMOUS)

Kadapa, Andhra Pradesh, India – 516 005

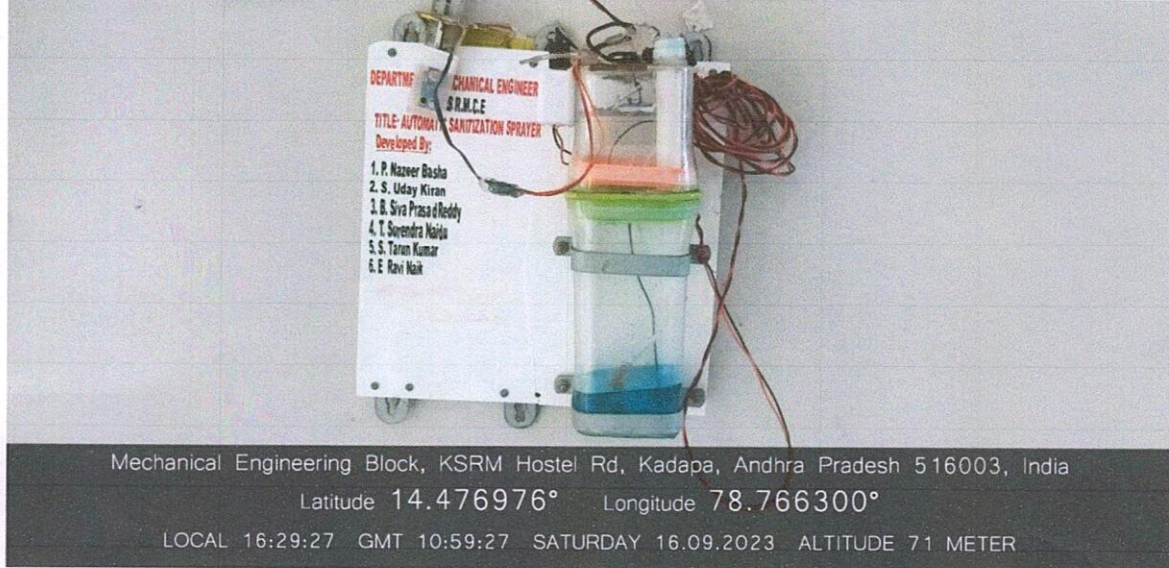
Approved by AICTE, New Delhi & Affiliated to JNTUA, Ananthapuramu.

An ISO 14001:2004 & 9001:2015 Certified Institution



7.1.2 – Geotagged Photos

Sensor based Energy Conservation –



An IoT-operated sanitization sprayer was developed by students under the guidance of Dr. B. Sudharshan, Associate Professor in the ME Department



IQAC

Co-ordinator

Internal Quality Assurance Cell (IQAC)

KSRM College of Engineering

Kadapa - 516 003

V. S. S. Murthy

Principal

PRINCIPAL

K.S.R.M. COLLEGE OF ENGINEERING
KADAPA-516005, (A.P.)



/karmce.ac.in

Follow Us:



/karmceofficial



K. S. R. M. COLLEGE OF ENGINEERING

(UGC-AUTONOMOUS)

Kadapa, Andhra Pradesh, India – 516 005

Approved by AICTE, New Delhi & Affiliated to JNTUA, Ananthapuramu.

An ISO 14001:2004 & 9001:2015 Certified Institution



KSNR
lives on..

7.1.2 – Geotagged Photos

LED Bulbs / Power Efficient Equipment –



LED Bulbs in the KOR Auditorium



LED Bulbs in the Admission Cell


IQAC

Co-ordinator

Internal Quality Assurance Cell (IQAC)

KSRM College of Engineering

Kadapa - 516 003

V. S. S. Murthy

Principal

PRINCIPAL

K.S.R.M. COLLEGE OF ENGINEERING
KADAPA-516005, (A.P.)



/krmce.ac.in

Follow Us:



/krmceofficial



K. S. R. M. COLLEGE OF ENGINEERING

(UGC-AUTONOMOUS)

Kadapa, Andhra Pradesh, India – 516 005

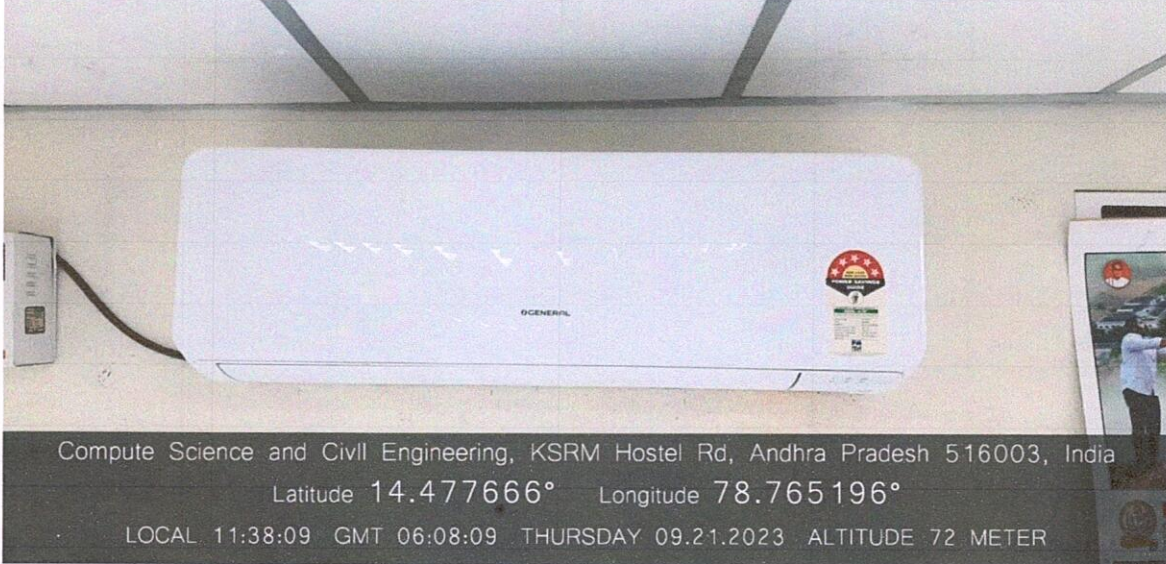
Approved by AICTE, New Delhi & Affiliated to JNTUA, Ananthapuramu.

An ISO 14001:2004 & 9001:2015 Certified Institution



7.1.2 – Geotagged Photos

LED Bulbs / Power Efficient Equipment –



5 Star Rating Air Conditioning Unit



IQAC

Co-ordinator

Internal Quality Assurance Cell (IQAC)
KSRM College of Engineering
Kadapa - 516 003

V. S. S. MULLA
Principal

PRINCIPAL
K.S.R.M. COLLEGE OF ENGINEERING
KADAPA-516005, (A.P.)



/ksrmce.ac.in

Follow Us:



/ksrmceofficial



K. S. R. M. COLLEGE OF ENGINEERING

(UGC-AUTONOMOUS)

Kadapa, Andhra Pradesh, India – 516 005

Approved by AICTE, New Delhi & Affiliated to JNTUA, Ananthapuramu.

An ISO 14001:2004 & 9001:2015 Certified Institution



7.1.2 – Geotagged Photos

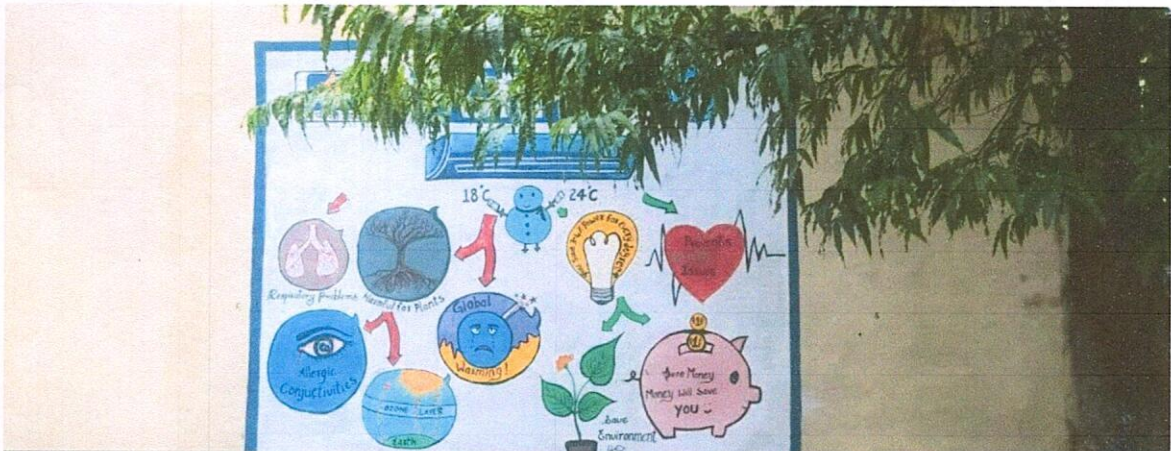
Energy Saving Paintings –



FQG8+W5F, Krishnapuram, Andhra Pradesh 516003, India

Latitude 14.476883° Longitude 78.765638°

LOCAL 11:38:16 GMT 06:08:16 THURSDAY 21.09.2023 ALTITUDE 72 METER



FQG8+W5F, Krishnapuram, Andhra Pradesh 516003, India

Latitude 14.476867° Longitude 78.765630°

LOCAL 11:38:35 GMT 06:08:35 THURSDAY 21.09.2023 ALTITUDE 72 METER



Co-ordinator

Internal Quality Assurance Cell (IQAC)
KSRM College of Engineering
Kadapa - 516 003

U. S. S. Muly

Principal

PRINCIPAL
K.S.R.M. COLLEGE OF ENGINEERING
KADAPA-516005, (A.P.)



/ksrmce.ac.in

Follow Us:



/ksrmceofficial